

Happy Holidays from Generations™



In this exercise we will see how easy it is to take a simple word and create a design that will brighten your holiday season. This could be put onto a stocking or as a wall plaque for a door as a cheery greeting for your visitors.

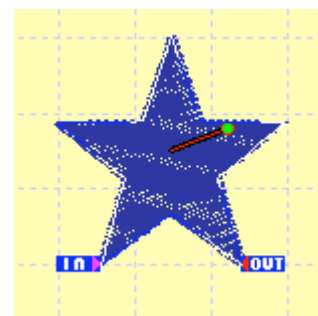
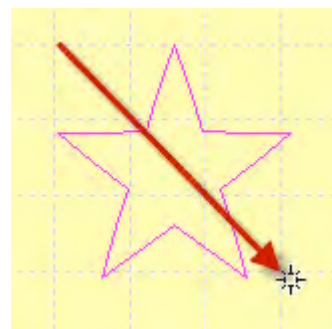
We will cover the following using the Generations™ Software Program:

- * Create Lettering
- * Insert a Building block
- * Add a Punch Tool Circle
- * Create a feathered edge
- * Create a Stamped fill Pattern – Star
- * Create an outline around lettering
- * Change fill Patterns from fill to satin
- * Divide a fill area to create a multiple fill

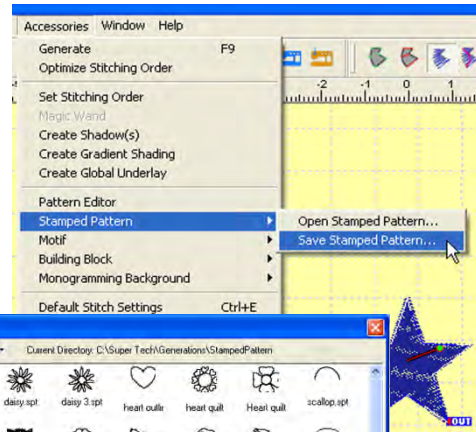
Creating a Star Stamped Pattern Fill.

The stamp fill patterns are infinite in the Generations™ program. Just about any outline picture can be turned into a stamped fill pattern. Let's look at creating a star fill pattern to fill in the 'N' of our design with stars.

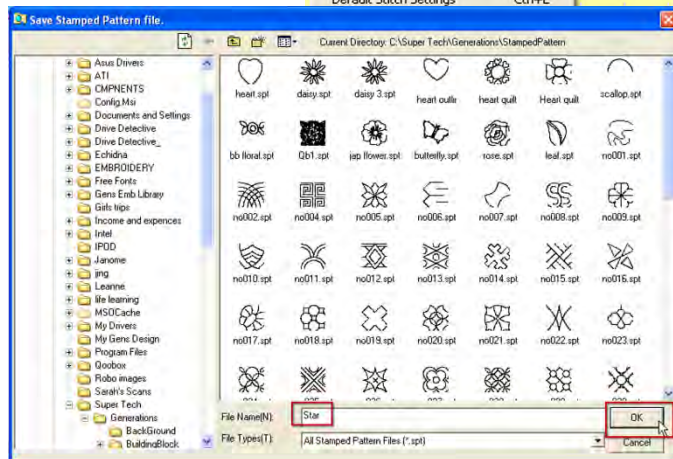
1. Open the Generations software program.
2. To create the Stamped fill pattern we will have to save the shape. Click on the **N Polygon/Star** in the Punch tools toolbar
3. Hold left mouse button down, place the pointer on a corner of a grid box and diagonally drag across 3 grids (30mm). Take finger off the mouse button to anchor the shape and press Enter on the keyboard to create stitches.
4. Press **ESC** to remove the cross pointer and the star shape will now be flashing.



- From the drop down menu click on **Accessories** > **Stamped Pattern** > **Save Stamped Pattern**. Type in the word 'Star' in the file name and OK.
- Once the shape has been saved as the stamped pattern, press **CTRL & Delete** to remove the star for a clean workspace.

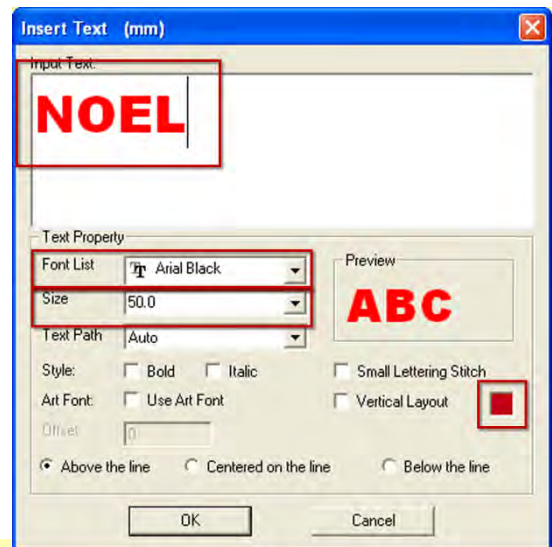


This will now be available in the program when we are creating the Stamped Pattern fill for the letter 'N' in the design.

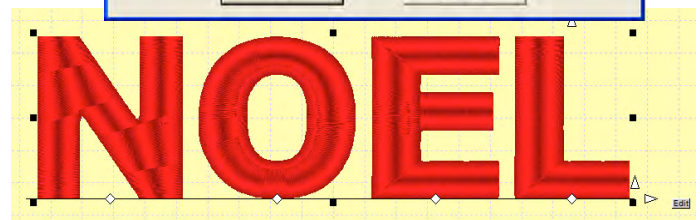


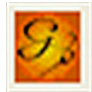
Creating Text.

- Click on the Insert Text icon on the Create Toolbar 
- We need to use a thick font to allow for a decent amount of fill pattern for the area. Select the Text type **ARIAL BLACK** or a font that is bold.
- Select a size that you could fit into an appropriate hoop. The finished design is approximately 204mm x 75mm. We have selected the Size **50.0** to fit into a 200mm x 300mm hoop comfortably. If you have a smaller hoop, select a smaller font size to accommodate the design.



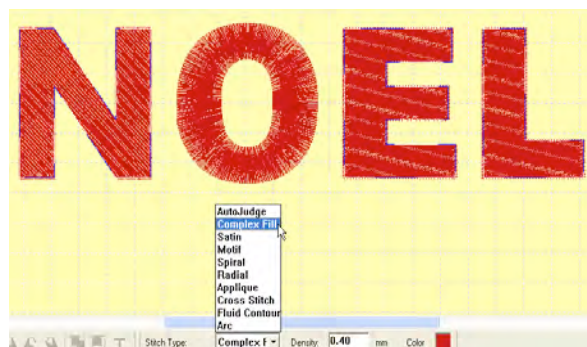
- Click on the blue chip box and change to **red** using the basic chart, click OK to continue.
- Type in the word **NOEL** in capital letters and click OK



- The text will be inserted on to the workspace as a dotted area and **Generate** to create the stitches. 

Changing a Fill Pattern of Selected Areas.

1. For this exercise the letters 'N', 'E' and 'L' will be in a complex fill pattern, so let's change these areas all at once before we start to save time.
2. Right mouse click on the letter 'N' and hold the CTRL key on the keyboard and right mouse click on the letters 'E' and 'L'. They will now be flashing.

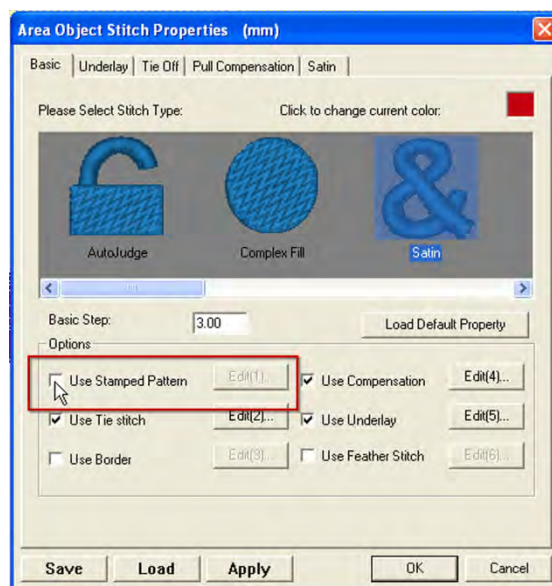


3. From the **Quick Stitch Type** menu at the bottom of the screen select **Complex Fill** and the letters will automatically become a complex fill.
4. Right click off the letters to deactivate the flashing.

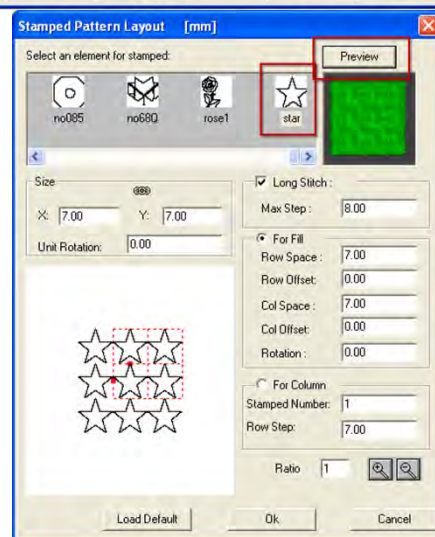
Inserting a Stamped Pattern Fill.

We will now change the fill pattern of the letter 'N' to the star stamped pattern we have just created.

1. Right mouse click on the letter 'N' so that it is flashing and then click on **Stitch Properties** (press space bar for the shortcut)



2. On the Area Object Stitch Properties select **Use Stamped Pattern**
3. At the top are the stamped patterns available. Move the slide bar along until you find the 'STAR' and click on it. Nine stars will appear in the window.



The pattern of the stars can be altered in size and spacing. Place the pointer on the top right hand corner square of the nine stars, hold left mouse button down and you can rotate the pattern. The two middle stars will allow you to move the rows apart and the centre will allow you to rotate the individual stars. Have a play with the settings and select **Preview** to see what special effects you can get.

When you are happy with the pattern, click **OK** then **OK** in the Area Objects stitch properties to create the star fill pattern.




4. Click on **3D** to view, click again to turn off.

What a fantastic feature, you could even put in the family name, or a significant symbol of meaning to you or your family.

Creating a Christmas Wreath from the Letter 'O'.

To give some character to the design we are going to change the letter 'O' to a Christmas Wreath. This technique could be used to create a single wreath design for a festive design idea.

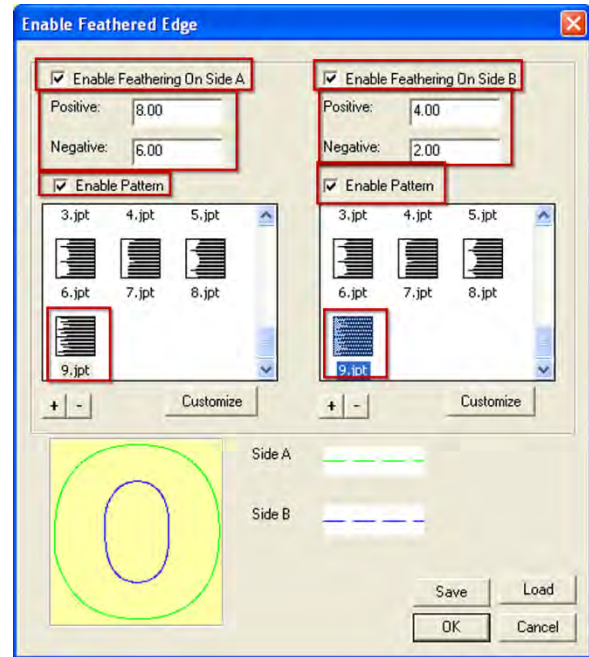
1. Right mouse click on the letter 'O'. From the bar or thread bar select a green color for the wreath.

2. Click on **Stitch Properties**  so that we can open the feather stitch edge

3. Click in the box for **Use Feather Stitch** and click on **Edit 6** to open the feather stitch properties.

Here we can create a frilled edge to give the effect of the design fill of leaves on a spruce tree.

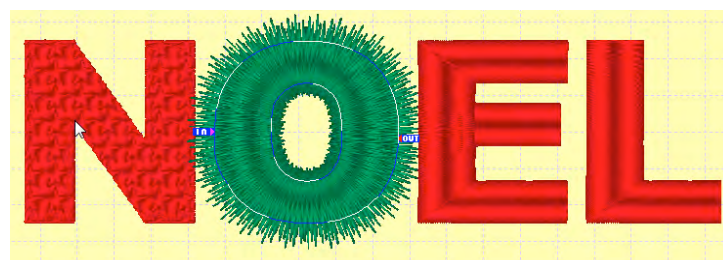
4. Place a tick in both the A & B Enable Feathering.
5. Change the Side A Positive value to 8 and Negative to 6



6. Change the B side Positive value to 4 and negative to 2.

By changing these values you will get different lengths of stitching and edge styles, the greater the number the more the stitches will extend beyond the area and the lesser the number the length of stitching will retract. If you wanted to just change the outside, you will need to identify the side of the area you require by the green or blue line, side A is the green line, or B the blue line. This can be viewed in the window in the bottom left hand corner. This will determine which side will be activated.

7. Place a tick on both sides to Enable Pattern then using the side slide bars find a pattern to suit. We have chosen the 9.jpt to get a jagged edge for the spruce look. This will give us a great new pattern on the edge of the wreath.
8. Click **OK**, then **Ok** in the **Area Object Properties** to change the stitching area.



Adding Extra Underlay to Stabilise the Area.

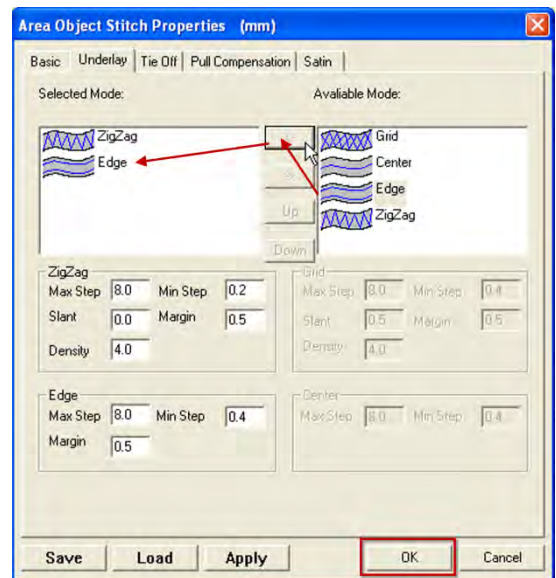
Because this wreath design has many stitches that pull in towards the centre of the design, this could do with some extra stability with some added **Underlay**.

1. While the 'O' is still flashing open the **Stitch Properties** and click on the Underlay Tab at the top of the window.

Here you will see the default is a zigzag underlay.


2. Click on the **Edge** and the arrow in the centre of the two underlay types to move it from the underlays available to the left hand side, which are the underlays that are being used. Click **OK** to continue

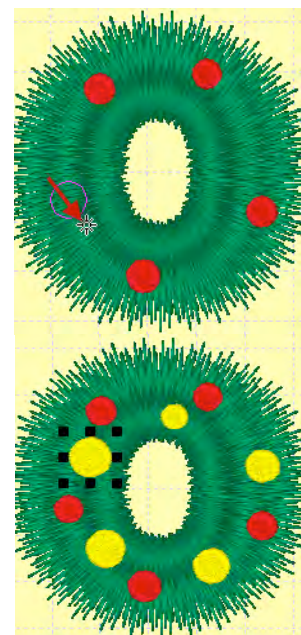
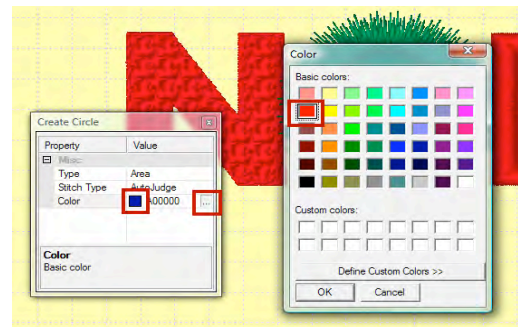
Lets jazz up our wreath with some color and a bow to make it a little more realistic.



Adding Baubles and Bow.

Festive wreaths always need decoration to get you in the mood, so let's add some easy decorations

1. Click on **Create Circle** from the Punch Toolbar. 
2. In the Create Circle Properties window click on the **Color chip**.
3. Click on the ellipsis on the right hand side (this is the box with the 3 small dots) '...' and this will open the Basic color palette. Change the color to red and click OK to continue.
4. Place the cross pointer on the 'O' Hold the left mouse button down and drag diagonally to create a small circle. When you have created the size you want take your finger off the left mouse and the circle will be created. Repeat and create as many random circles as you would like.
5. The Create Circle window should still be opened, change the color to a gold and create some more circles for added contrast.
6. Close the Create Circle window and press **ESC** to eliminate the cross pointer.

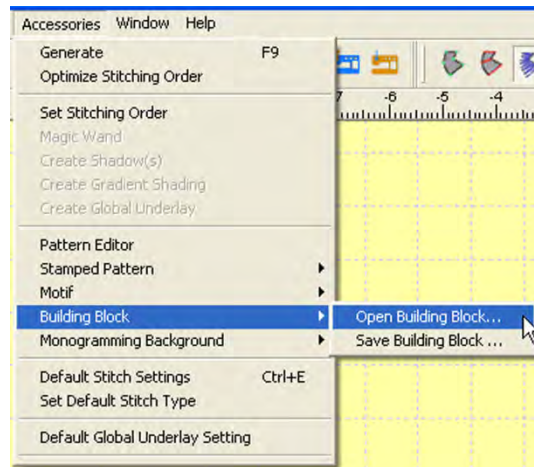


Adding a Single Building Block.

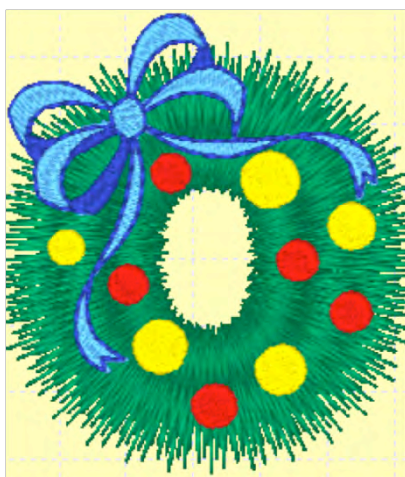
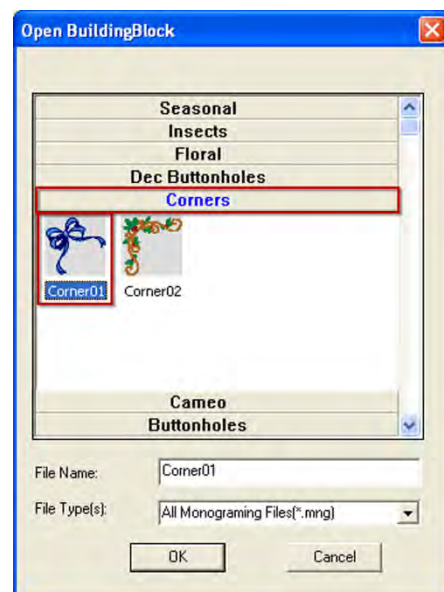
If the Building blocks are not visible at the bottom of your workspace, you can open the window by clicking on the **Accessories** from the drop down menu, **Building Blocks > Open Building Blocks**.

This option is great if you only need to insert a single building block and don't want the Building Block window at the bottom of the screen taking up your workspace.

OPTION For opening multiple building blocks and using the Toolbar at the bottom of the screen from the dropdown menu click on **View > Toolbar > Building Blocks**.



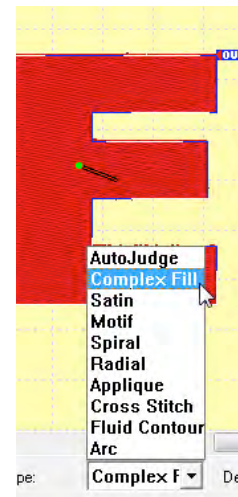
1. Click on **Corners** and select the **Corners 1 Bow**, OK
2. The Bow will now be placed on the workspace. Left click on the bow so the small black squares appear around the edge, hold left mouse button down and move into position. The Baubles may need to be moved so that you are happy with the look of the wreath.
3. To change the bow so that it is red, click on the blue color chip on the left hand side of the screen and the area will now be flashing. Above the blue color chip will be a red color chip.




Creating an Embossed Area.

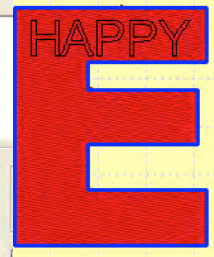
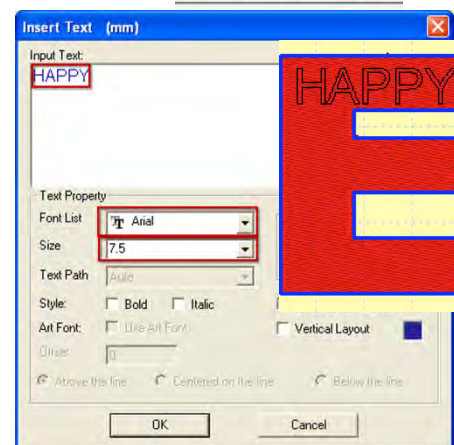
Let's add a subtle message into our design that will make people notice your brilliant embroidery skills. Embossing allows you to add visual depth to your design and to embed letters or individual shapes within a fill pattern. Embossing adds needle penetrations within a fill area to give definition to an area.

1. Right mouse click on the letter 'E' so that it is flashing and click on **View Embossed**.

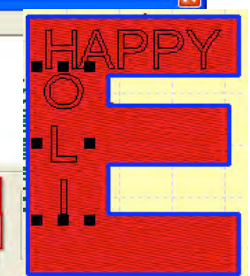
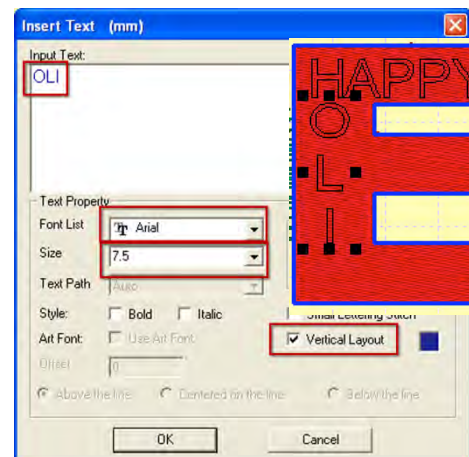


We will now create a hidden message and embed it into the filled area.

3. Click on the Insert Text 
4. The word NOEL will still be in the window, press Delete on the keyboard to remove.
5. Change the size to 7.5, font type Arial or similar and type in 'HAPPY' in capital letters and then click OK.
6. Place the pointer on the word, hold down left mouse and drag so that it is in the top section of the 'E'.
7. Insert Text again but this time type in 'OLI' and place a tick in the Vertical Layout. Click OK.



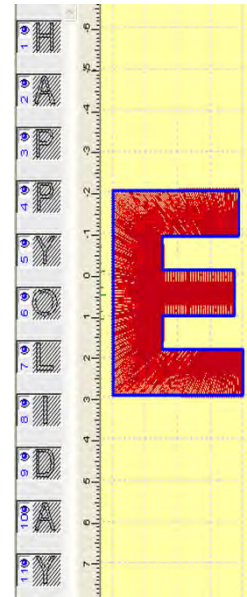
8. The Lettering may be a bit longer than required. Use the black small squares around the word to adjust to fit into the area then place the pointer onto the bottom middle square, the pointer will change to a double ended arrow, hold the left mouse down and move to adjust. Repeat on the sides if necessary until the word is in the area and the words align.
9. Now repeat with the word 'DAY' with it in the horizontal position, make sure you remove the tick from the Vertical Layout box.



10. To Emboss the area the words have to be activated. You will notice now that the lettering has appeared in the Stitch Sequence bar and the stitching areas have disappeared. Once in embossing mode the stitch sequence bar becomes the embossing bar



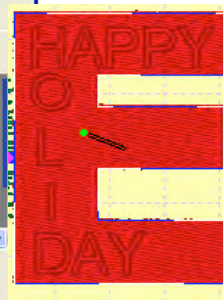
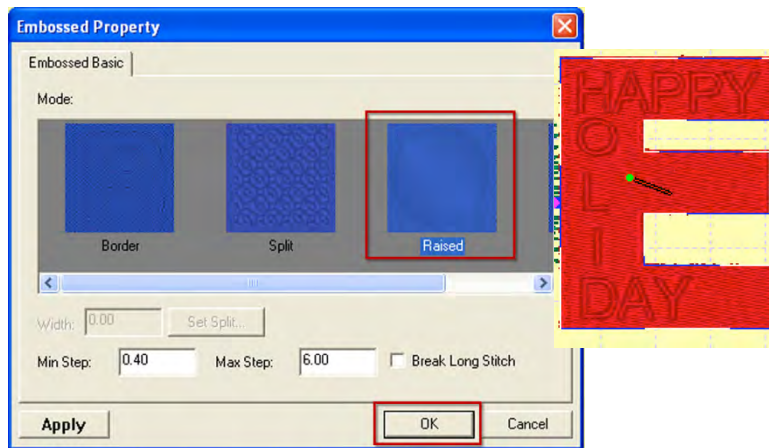
- Left click on the 'H' at window number 1 in the stitch sequence bar, hold the shift key on the keyboard and click on the 'y' at window 12. The Lettering has now changed on the design area to red.



- Open **Stitch Properties**



We want the lettering to stand out on the design so click on **Raised > OK > Generate**



- Click on **View Embossed** to turn it off and select to see the word embossed into the fill pattern.



Doesn't this give an extra touch to your design? This is also great if you would like to add a name or even putting in your signature, then everyone will know who created the design.

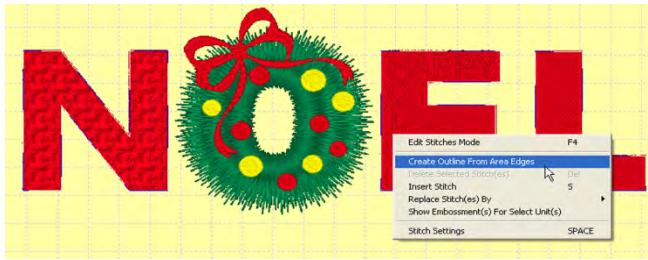
- Click on **3-D** to turn off the 3D function.



Creating an Outline Border.

The outlining of the letters will have to be inserted here before we divide the letter 'L' into the candy cane fill because if we create the outline after you will get the outline around each piece of the stripes.

- To outline an area of stitching right mouse click on the letter 'N' hold the CTRL key and right mouse click on 'E' & 'L' so they are flashing.
- Right mouse click on one of the letters and select **Create Outline From Areas Edge**. The Create Outline from Area Border window will appear. The default is Satin so let's leave the default settings and click on **OK**.



3. The outline of the letters will be flashing. Select a green color from the color palette that is a little different from the wreath color. A different color has been selected so that when we optimise the stitching order at the end of this exercise the order will remain in the correct stitching order.

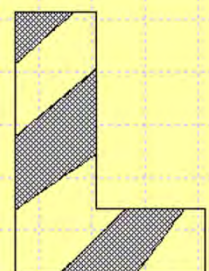
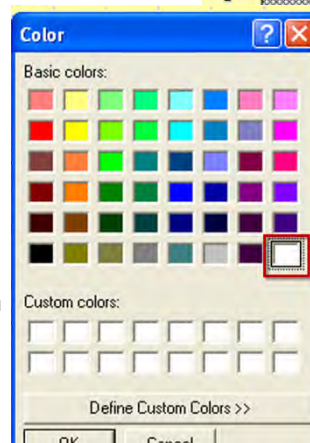
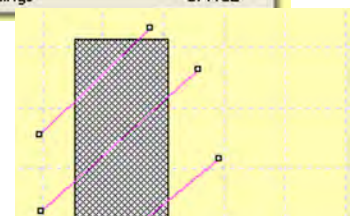
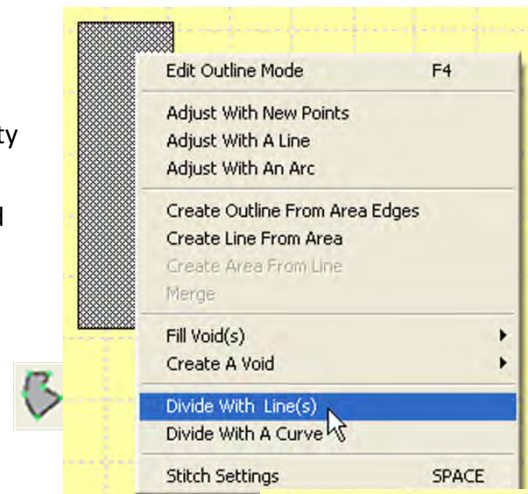


4. The outline will automatically Generate.

Dividing a Filled Area.

The dividing tools are fantastic tools to add creativity to a design and to separate areas. The 'L' looked a little like a candy cane so let's dissect the shape and add to our festive design.

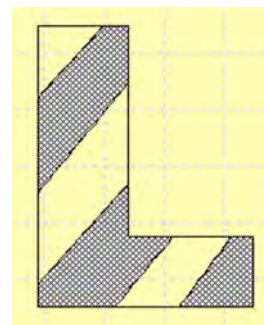
1. Right mouse click on the letter 'L' so that it is flashing, then click on View Outline and the letter will now become a **grey-hatched area**.
2. Right mouse click on the grey-hatched area on the letter 'L' and select **Divide with a Line(s)**.
3. The pointer will now become a cross pointer. Left mouse click outside the area and place lines across the letter on a slight angle to create a candy cane like image to create 6 areas. If you create a wrong placement press the Backspace key to undo then press **Enter** when completed to separate the areas.
4. Press the ESC key to remove the cross



pointer.

5. Left click on the letter 'L' and the wire frame of the area will be visible.
We now need to change every second piece to white. Right mouse click on the top piece of the letter. Hold down the CTRL key and right click on the alternate sections. Change the color to white either by the color bar or thread bar and the area will automatically Generate.

For the red section right mouse click in the top empty section, hold the Ctrl key and right click in the two remaining and Generate. Previously the color was chosen as red so it will automatically Generate as a red section.



Adjusting Spacing of Lettering.

Looking at the design you may find that the letters overlap each other as we have made the area of the 'O' stitch outside its area and placed outlines around the other letters. If you need to adjust left click on the design so the small black boxes appear around the edge of the design.

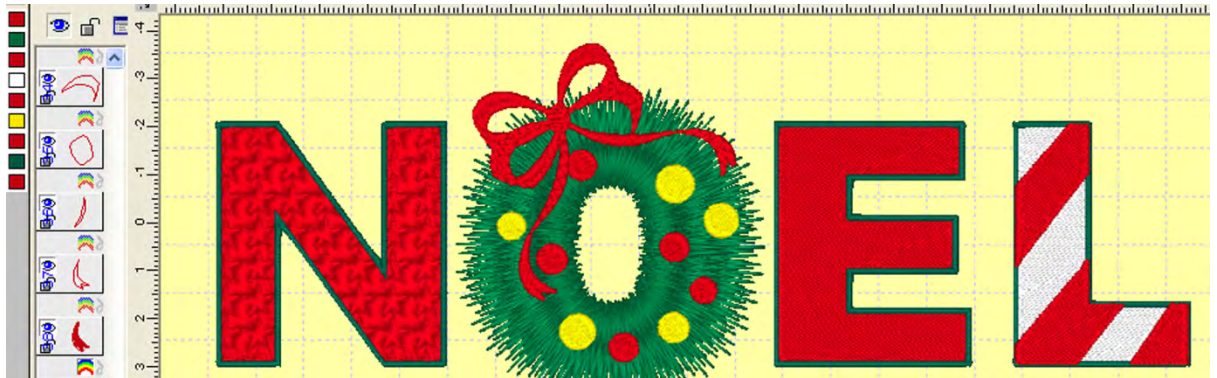
Place the pointer on the arrow at the base of the lettering on the right hand side. Hold the left mouse button down and drag to the right to separate the design.

You will need to Generate  to recalculate the stitching.

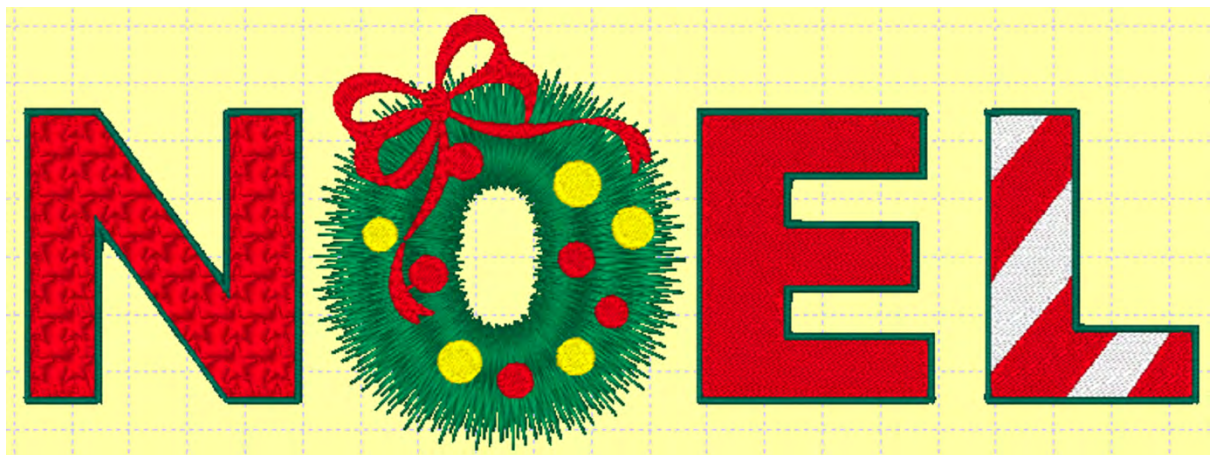


Minimising Stitching Time.

Generations has the ability to be able to run the design in the most efficient order. If you look at the color chips you can see there is a number of color changes, this is due to the dividing of the letter 'L' to create the candy cane effect. Most embroiders are not fans of color changes so let's eliminate the color changes we don't need.



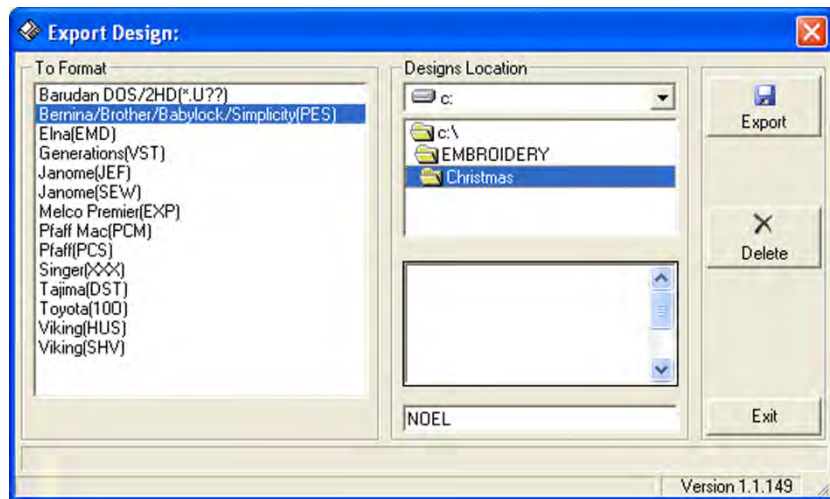
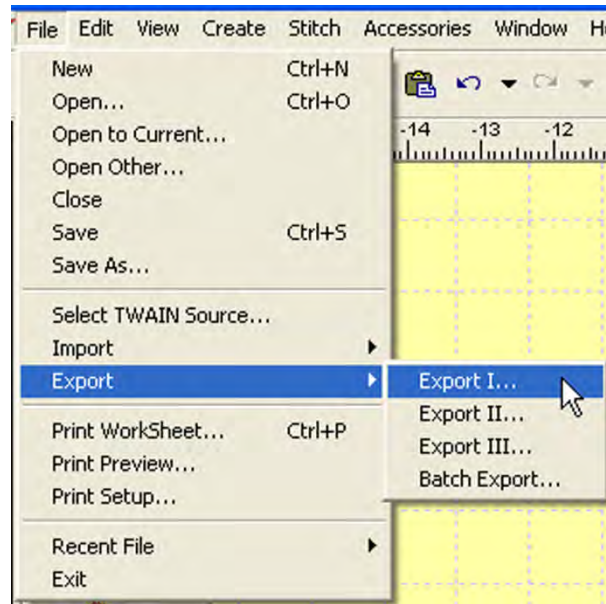
1. Click on **Accessories > Optimise Stitching Order**.
2. When the design has been optimised you will have 2 green colors, If you would like these to be the same green we will use the same technique as we used when we change the bow to red. Left click on one of the chips and then right click on the other green and they will both become the same color. This does add another color change but due to the sequence of the design and the layers this sequence works very well.



The design now has to be saved as a .GEN file. Click on Save  and select a folder to save it to with the name 'Noel'.

To stitch out the design it will need to be exported in your embroidery machine format. There are a number of ways to export to your design to your machine using Generations™, but here is one to show you how.

1. Click on File from the drop down **Menu > Export > Export 1.**
2. A Format type will need to be chosen and the drive and folder you would like to save it to. You will need to identify these key areas to make sure it is saved in the correct place.
3. If you have an embroidery machine that you can directly download the design to, make sure you have turned on your machine, connected the machine to your computer and selected the correct drive to send it too.



On the next two pages are the design information and a template of the design. This shows the details you will need before you stitch the design including the stitching order and requirements of thread for your design. This is a great tool to get you ready to stitch your design.

I hope that you have enjoyed creating a new festive design to add to your embroidery library and that you stitch it onto a family keepsake to enjoy every season.

Kind regards
Leanne Church



generations@echidnaclub.com.au
www.echidnaclub.com.au

Noel

Author Name: Leanne Church
 Design File: noel.gen

Print At: 2009-10-21

Design Name: noel	Date: 2009-10-21 12:34:48	Customer Name:	Machine Set: Default
Size: 204.20 mm x 75.80 mm	Stitch No.: 21067	Change Color No.: 4	Trim No.: 26

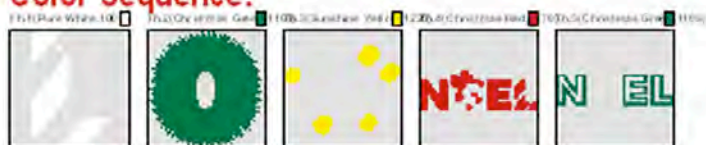
Design No.:

No.	Thread	Length(m)
1.	Hemmingworth/Pure White, 1001	3.18
2.	 Hemmingworth/Christmas Green, 1109	17.68
3.	 Hemmingworth/Sunshine Yellow, 1226	1.43
4.	 Hemmingworth/Christmas Red, 1270	28.66
5.	 Hemmingworth/Christmas Green, 1109	7.91

ZOOM 48%

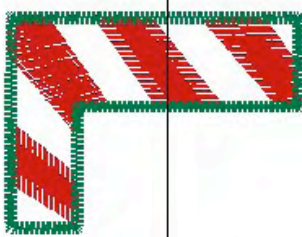
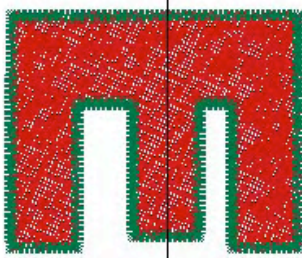
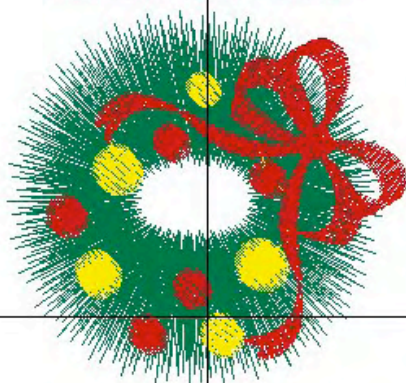
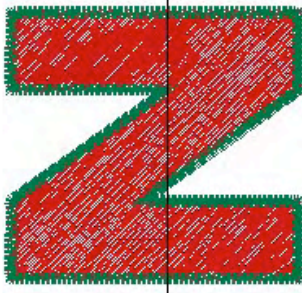


Color Sequence:



Printed by: echidna.com.au, copyright: 2004-2009, All rights reserved.

Pattern by Generational Pkts. Copyright 2003-2007. All Rights Reserved.



row: 1/1 col: 1/1